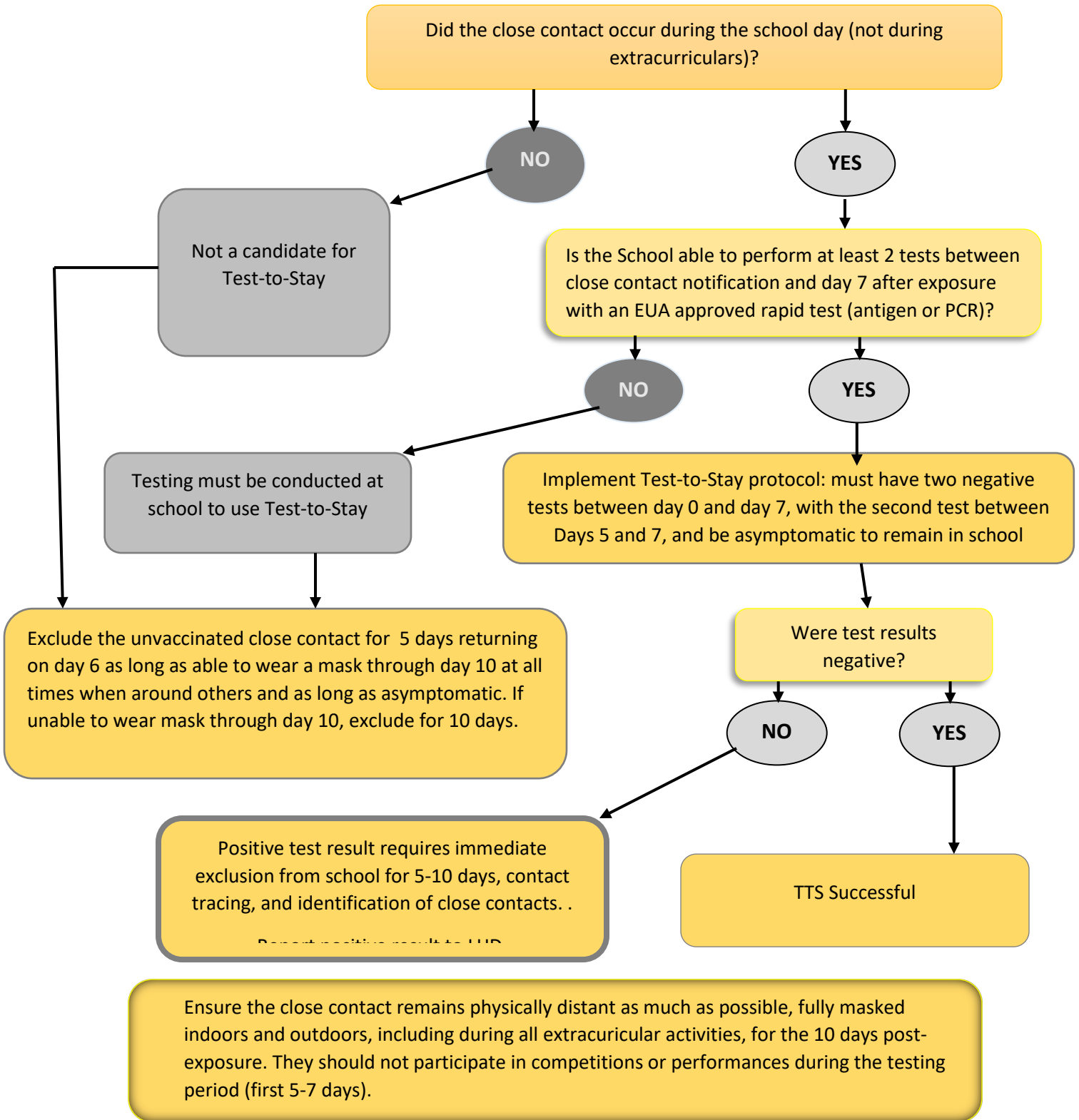


**Test -to-Stay Protocol Flow Chart 1/11/2022  
(Students and Staff only<sup>1</sup>)**



<sup>1</sup> Persons age 5-17 who have completed COVID-19 primary vaccine series, and for persons age 18 and over who have completed recommended vaccine doses, including boosters, and persons who have completed additional primary shots for some immunocompromised people